

Standard Locknuts

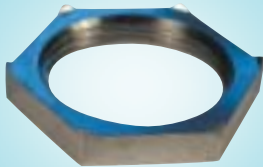


A range of locknuts available either in a standard Brass or Nylon and an earth bonding version for use with EMC cable glands wherever varnished, anodised and power coated housings are used. The EMC locknut has shaped edges which will cut through the insulating layer to guarantee optimum contact.

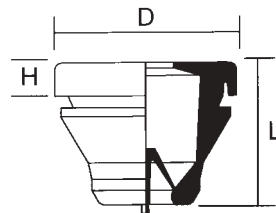
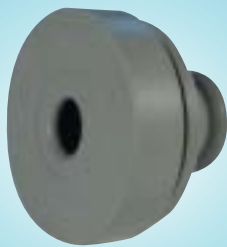
Body material: Nickel plated brass or Glass filled nylon
 Approvals: UL, VDE, SEV

Stock No.	Manf Ref ¹	Type	Thread	Unit Price		
				1-24	25-99	100+
2811127	50.212M	BRASS	M12	0.14	0.13	0.12
2811130	50.216M	BRASS	M16	0.15	0.14	0.13
2811133	50.220M	BRASS	M20	0.17	0.16	0.14
2811136	50.225M	BRASS	M25	0.26	0.24	0.22
2811139	50.232M	BRASS	M32	0.36	0.33	0.31
2811142	50.240M	BRASS	M40	0.61	0.56	0.52
2811145	50.250M	BRASS	M50	1.69	1.55	1.44
2811148	50.263M	BRASS	M63	2.20	2.02	1.87
2811103	209M	BRASS	PG9	0.08	0.07	0.07
2811106	211M	BRASS	PG11	0.10	0.09	0.09
2811109	213M	BRASS	PG13.5	0.11	0.10	0.09
2811112	216M	BRASS	PG16	0.13	0.12	0.11
2811181	50.212PA	NYLON	M12	0.07	0.06	0.06
2811184	50.216PA	NYLON	M16	0.07	0.06	0.06
2811187	50.220PA	NYLON	M20	0.07	0.06	0.06
2811190	50.225PA	NYLON	M25	0.14	0.13	0.12
2811193	50.232PA	NYLON	M32	0.32	0.29	0.27
2811196	50.240PA	NYLON	M40	0.59	0.54	0.50
2811199	50.250PA	NYLON	M50	0.73	0.67	0.62
2811202	50.263PA	NYLON	M63	0.80	0.74	0.68
2811169	209PA	NYLON	PG9	0.07	0.06	0.06
2811172	211PA	NYLON	PG11	0.08	0.07	0.07
2811175	213PA	NYLON	PG13.5	0.09	0.08	0.08
2811178	216PA	NYLON	PG16	0.09	0.08	0.08
2811151	50.216MPOT	BRASS EMC	M16	0.52	0.48	0.44
2811154	50.220MPOT	BRASS EMC	M20	0.58	0.53	0.49
2811157	50.225MPOT	BRASS EMC	M25	0.71	0.65	0.60
2811160	50.232MPOT	BRASS EMC	M32	0.98	0.90	0.83
2811163	50.240MPOT	BRASS EMC	M40	1.65	1.52	1.40
2811166	50.250MPOT	BRASS EMC	M50	5.91	5.44	5.02
2811115	209MPOT	BRASS EMC	PG9	0.41	0.38	0.35
2811118	211MPOT	BRASS EMC	PG11	0.43	0.40	0.37
2811121	213MPOT	BRASS EMC	PG13.5	0.46	0.42	0.39
2811124	216MPOT	BRASS EMC	PG16	0.47	0.43	0.40

Earth Bonding Locknuts
Brass EMC



Cable Retention Grommet



A range of cable retention grommets to provide a quick, low cost method of taking a cable through a bulkhead or panel whilst providing some measure of cable retention and sealing. This product approved to IP67, is similar to a blind grommet but has a tapered top which, when the cable is inserted and pulled slightly back, achieves cable retention and sealing. Supplied standard as grey, other colours are available.

Hole cut-out (mm)	12.5	16.5	20.5	25.5
Cable dia. range (mm)	3-5	5-7	7-10	10-14
Panel thickness (mm)	1.3-5	1.3-5	1.3-5	1.3-5
Head dia. (D)	19	23	27	32
Head height (H)	6.3	6.3	6.3	6.3
Overall length (L)	18.5	18.5	19.5	19.5
Approvals	UL, VDE, SEV			

PG sizes also available, please consult sales

Stock No.	Manf Ref ¹	Hole Cut-out	Unit Price		
			1-24	25-99	100+
9731001	345078-1	12.5MM	0.25	0.23	0.21
9731004	345076-1	16.5MM	0.25	0.23	0.21
9731007	345072-1	20.5MM	0.25	0.23	0.21
9731010	345071-1	25.5MM	0.31	0.29	0.26

Spiral Top Glands



A range of glands with the added feature of a spiral cable support which will reduce the possibility of damage caused by pulling. Protection of IP68 up to 5 bar.

Thread	M12	M16	M20	M20	M25
Cable diameter	3-6.5	5-10	6-12	10-14	13-18
Thread length	8	15	11	15	15
Width across flats	15	22	24	27	33
Body material	Polyamide (PA6)				
Colour	Grey RAL 7001				
Temperature	-20°C to +100°C				
Approvals	UL, VDE, SEV				

Note: This series of glands is supplied without locknuts which are ordered separately. Please refer to the relevant section.

Stock No.	Manf Ref ¹	Thread	Cable Dia	Unit Price		
				1-24	25-99	100+
2811232	50.007M12PABS	M12	3-6.5	0.55	0.51	0.47
2811235	50.011M16PABS	M16	5-10	0.68	0.63	0.58
2811238	50.013M20PABS	M20	6-12	0.75	0.69	0.64
2811241	50.016M20PABS	M20	10-14	0.88	0.81	0.75
2811244	50.021M25PABS	M25	13-18	1.62	1.49	1.38