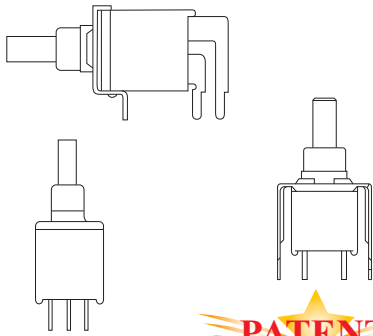




FEATURES:

1. Sealed construction - internal plunger o-ring and epoxy terminal seal standard
2. Carry the IP67 approvals



SPECIFICATIONS

CONTACT RATING: R- 0.4 VA max @ 20 V AC or DC
 LIFE CYCLE: 30,000 make-and-break cycles
 CONTACT RESISTANCE: 20 mΩ max. initial @2-4 VDC, 100 mA
 INSULATION RESISTANCE: 1,000 MΩ min.
 DIELECTRIC STRENGTH: 1,500 V RMS @ sea level.
 DEGREE OF PROTECTION: IP67
 OPERATING TEMPERATURE: -30°C to +85°C

MATERIALS

CASE and BUSHING - glass filled nylon 6/6, flame retardant heat stabilized (UL94V-0)
 PLUNGER - Thermoplastic polyester or glass filled nylon (UL94V-0)
 CONTACT AND TERMINAL - Copper alloy, silver or gold plated
 SWITCH SUPPORT - Copper alloy, tin plated
 TERMINAL SEAL - Epoxy

How do you build the switches you need!!

The ES-21 / ES-22 (straight terminal type), please see the (A) ;

The ES-21A/ES-21B/ES-22A/ES-22B, (Right angle type)please see the (B)

(A) ES - 21 - CV - 1 - C R - A5S -

Switches Function		Cap		Cap color		Plunger		Terminal		Vertical support Bracket	
ES-21	SPST off-mom.	CV	5.08	1	white	(none)	5.46(std.)	C	(std) P.C	(none)	
ES-22	SPDT on-mom.	CV1	7.62	2	black	SP	3.00			A5S	std. snap-in type
				3	red	FP	flush type			A5	straight type
				4	orange			Contact Material		RoHS code	
				5	yellow			Q	silver plated	H = RoHS Compliant	
				6	green			R	gold plated		
				7	blue			G	gold over silver		
				9	gray			K	gold / tin		

(B) ES - 21A - CV - 2 - R - S -

Horizon Right Angle	Vertical Right Angle	Switches Function	Cap		Cap color		Plunger		Support Bracket Option	
ES-21A	ES-21B	SPST off-mom.	CV	5.08	1	white	(none)	5.46(std.)	S	(std.) snap-in type
ES-22A	ES-22B	SPDT on-mom.	CV1	7.62	2	black	SP	3.00		
					3	red	FP	flush type	RoHS code	
					4	orange			H = RoHS Compliant	
					5	yellow				
					6	green				
					7	blue				
					9	gray				
								Contact Material		
								Q	silver plated	
								R	gold plated	
								G	gold over silver	
								K	gold / tin	



ES40-P

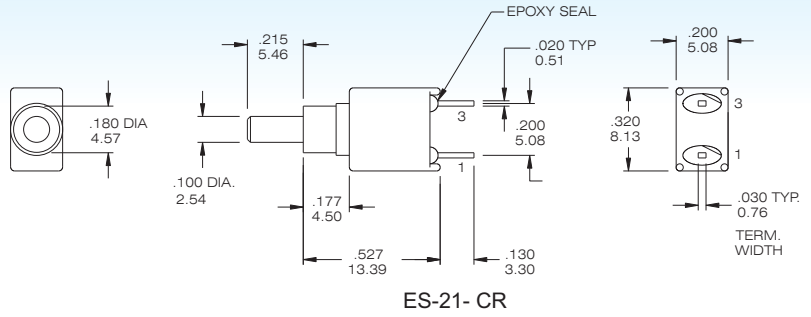
Sealed Sub-Miniature Push button Switches



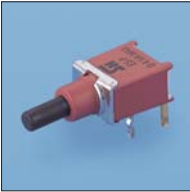
SPST



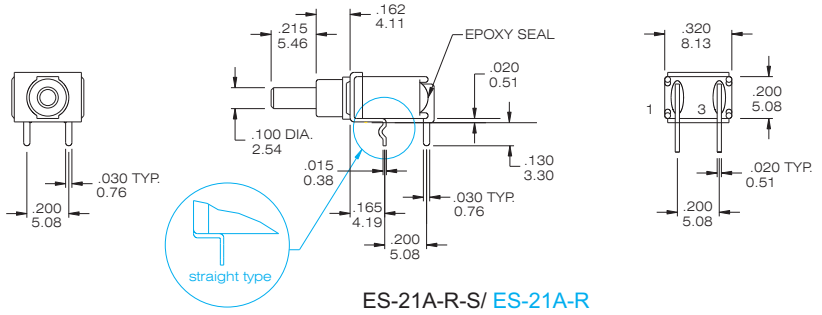
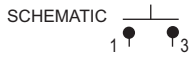
Model No.	Switching position	
ES-21	Off	Mom
Term. Comm.	open	1-3



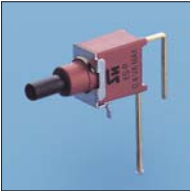
SPST



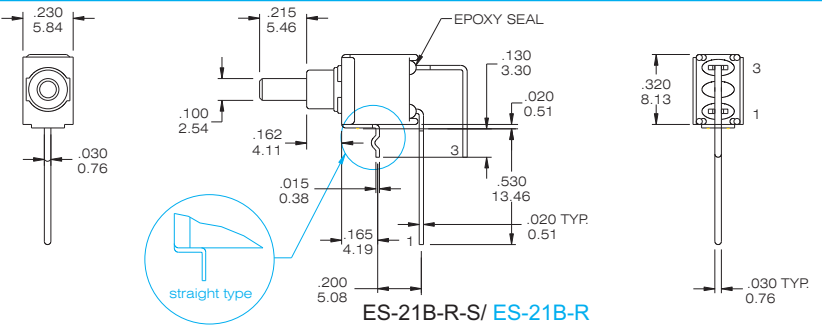
Model No.	Switching position	
ES-21A	Off	Mom
Term. Comm.	open	1-3



SPST



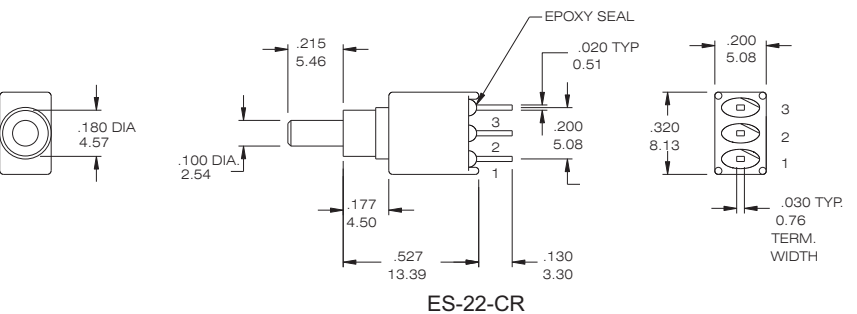
Model No.	Switching position	
ES-21B	Off	Mom
Term. Comm.	open	1-3



SPDT



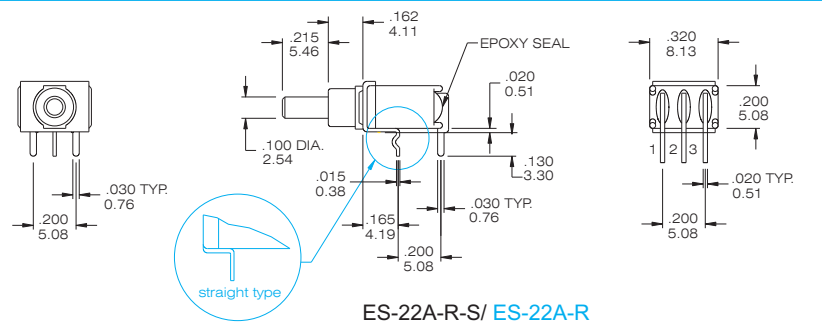
Model No.	Switching position	
ES-22	On	Mom
Term. Comm.	2-1	2-3



SPDT



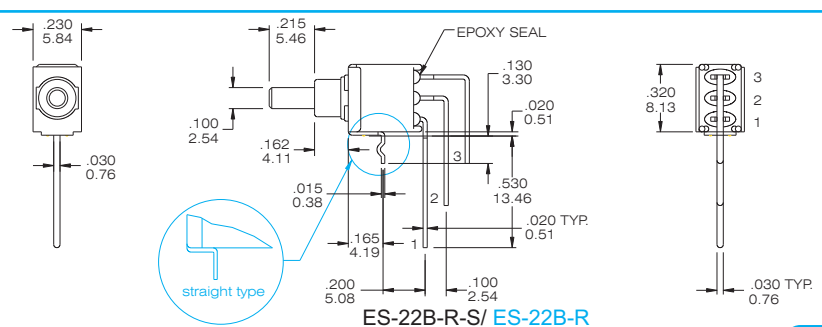
Model No.	Switching position	
ES-22A	On	Mom
Term. Comm.	2-1	2-3



SPDT



Model No.	Switching position	
ES-22B	On	Mom
Term. Comm.	2-1	2-3



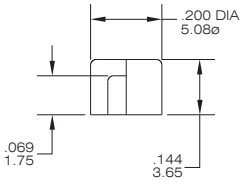
INDEX
TOGGLE
ROCKER
SLIDE
PUSH BUTTON / MICRO
DIP / ROTARY
KEY / TACT



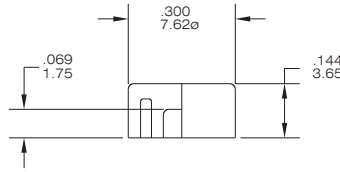
Cap Option

Cap color Option

CV

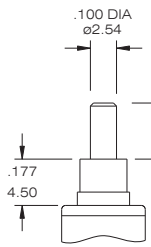


CV1

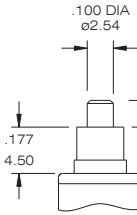


CAP & ACTUATOR OPTIONS	
1	White
2	Black(Std.)
3	Red
4	Orange
5	Yellow
6	Green
7	Blue
9	Gray

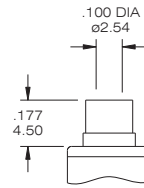
The Plunger Option



(none) std.



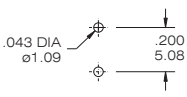
SP



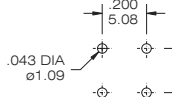
FP flush type

The P.C.B MOUNTING

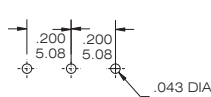
ES-21



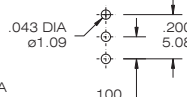
ES-21A



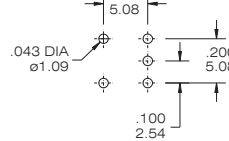
ES-21B



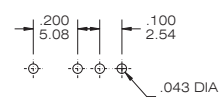
ES-22



ES-22A



ES-22B



CONTACT MATERIAL OPTIONS

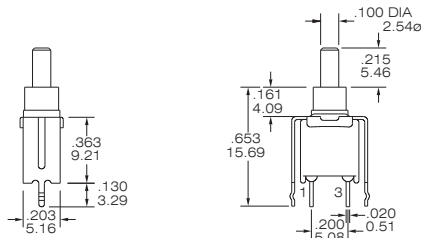
CODE	CONTACT MATERIAL	TERMINAL MATERIAL	RATING
Q	Silver plated	Silver plated	1 A @ 120V AC or 28 V DC;
R	Gold plated over nickel plated	Gold plated over nickel plated	0.4VA MAX @ 20 V AC or DC MAX
G	Gold plated over silver plated	Gold plated over silver plated	0.4 VA MAX @ 20 V AC or DC MAX or 1 A @ 120V AC or 28 V DC;
K	Gold plated over nickel plated	Tin over nickel plated	0.4VA MAX @ 20 V AC or DC MAX

* THE K option is only for some special item. Please inquire first when you need the "K" option

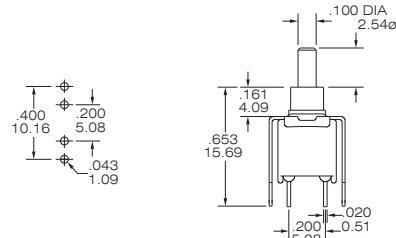
VERTICAL SUPPORT BRACKET OPTION

only for the ES-21/ES-22 .

A5S

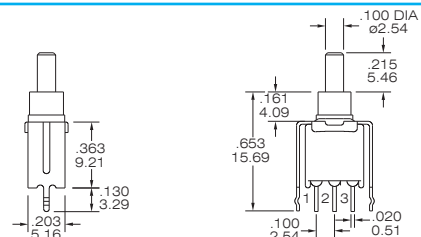


ES-21-CR-A5S (std.) snap-in type

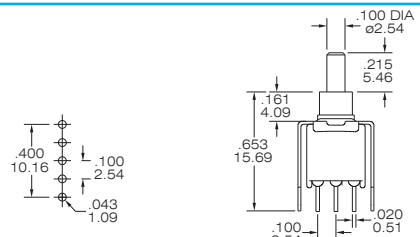


A5 straight type

A5S



ES-22-CR-A5S (std.) snap-in type



A5 straight type